



FUKE MATERIAL HANDLING MACHINE

安徽福客重工有限公司
Anhui Fuke Heavy Industry Co., Ltd.

website: <https://construction-equip.com>
whatsapp: +8613505697380
Address: Room 405, Building B-4, East Side
of Dazhong Road, Cuozen Town, Feidong
County, Hefei City, Anhui Province

FUKE MATERIAL HANDLING MACHINE

It is widely used in major steel mills, ports, yards, enterprise storage centers and other places to complete the loading and unloading of scrap and bulk goods, stacking operations, but also for material grabbing, lifting, cutting and other operations, including energy-saving control technology, hydraulic linkage technology, anti-tipping protection technology, automatic fault detection and real-time data display technology, with excellent overall performance. The whole machine performance, product safety and reliability, energy saving and high efficiency, can fully meet the needs of customers. Translated with www.DeepL.com/Translator (free version)

FK-ZG22

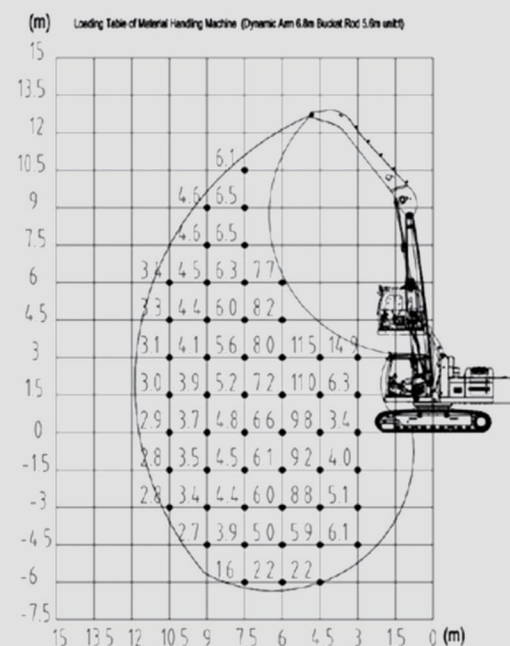


QUALITY CHANGES THE WORLD

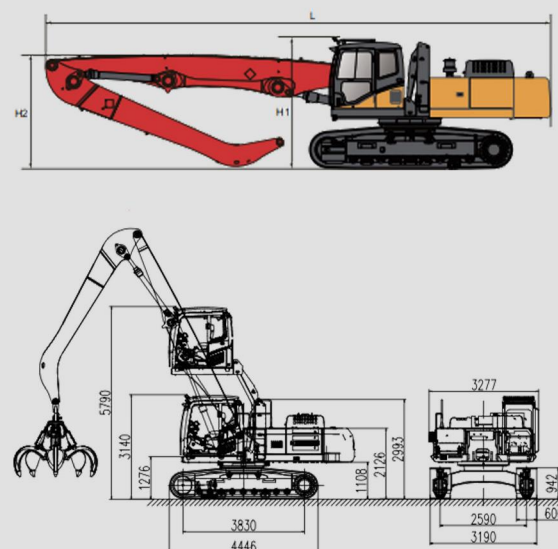
CONFIGURATION PARAMETER

Power System	Engine	Model	Cummins
		Maximum power	180KW/2000rpm
		Maximum torque	1200N.m/1300rpm
		Emissions	National IV
		Fuel tank volume	465L
Traveling device	Working gauge		2590mm
	Wheel spacing		3830mm
	Track width		600mm
	Max. travel speed		5km/h
Hydraulic system	Control type		Electronically controlled positive flow system
	Main Pump	Model	Rexroth
		Rated flow rate	2×260L/min
	Main Valve		Kawasaki
	Speed Reducer		Soter
	Boom cylinder		Hengli
	Bucket rod cylinder		ZTE
	Maximum system pressure		34.5MPa
	Hydraulic oil tank		230L
	Slewing support		Soter
Slewing mechanism	Maximum rotation speed		8rpm
Maneuvering room	Liftable height		2650mm
Basic parameters of the operation	Boom configuration	12m	
		Moving arm: 6.8m	
			Bucket bar: 5.6m
	Maximum operating radius		10.5m
	Maximum working height		10.5m
	Maximum operating depth		-6m
Theoretical load at maximum radius		3.4t	

SCOPE OF WORK



DIMENSION DIAGRAM



Optional parameters

