

FUKE 福客®

FK-910G

进 取 不 止

FUKE

**Boutique Manufacturing
Conquer The World With Quality**



Basic Configuration

Bucket capacity

0.8m³

Operation weight

3800kg

Rated load

1600kg

Wheel base

2150mm

*We follows the principle of continuous improvement Product performance parameters will be partially changed due to technical improvements without prior notice.

Anhui FUKU Heavy Industries Ltd.

web: www.sfuke.com

Basic Parameters

Bucket capacity: 0.8m³

Rated load: 1600kg

Wheel base: 2150 mm (D)

Wheel Tread: 1400 mm

Min. ground clearance: 380mm

Max. dumping height: 2700mm

Dump distance: 860mm

Total times: 10s

Operation weight: 3800kg

Engine model: Yuchai

Rated power/ speed: 42kw/2200 rpm

Dimension (L*W*H): 5210*1760*2580 mm (A*B*C)

Tyre: 23.5-16

Strong bearing

Driving comfort

Easy maintenance

Reliable structure

Excellent efficiency

Booster

Car air conditioner

Protective Device

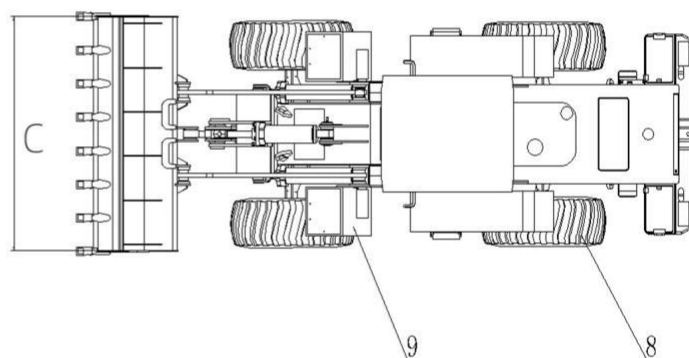
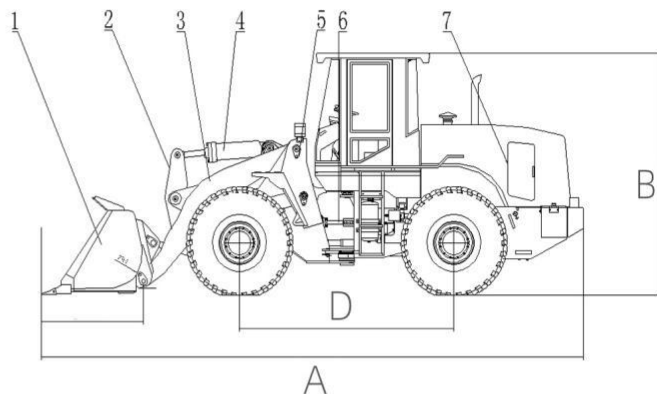
GPS positioning

On-board repair tools

CD Player

Fire extinguisher

Loader Outline



Accessories



*We follows the principle of continuous improvement Product performance parameters will be partially changed due to technical improvements without prior notice.

web: www.sfuke.com

whatsapp: +8613505697380

Address: Room 405, Building B-4, East Side of Dazhong Road, Cuozhen

Town, Feidong County, Hefei City, Anhui Province

web:

www.sfuke.com

Type 1 Mechanical Operating System

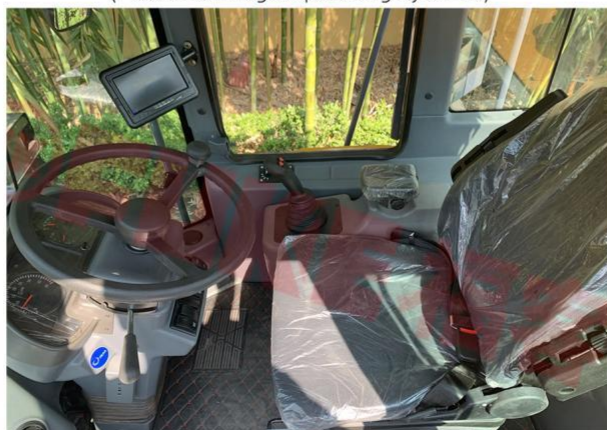


Type 2 Pilot Operating System



Type 3 Advanced Operating Systems

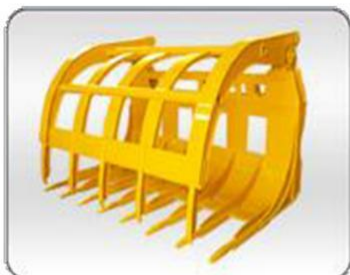
(Pilot and Image Operating Systems)



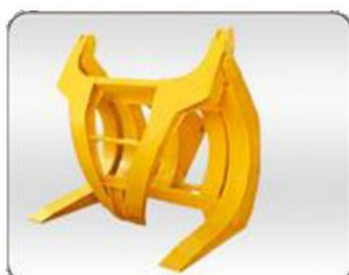
*We follows the principle of continuous improvement Product performance parameters will be partially changed due to technical improvements without prior notice.

Loader accessories ●

▼ Grass cutter



▼ Clamping machine



▼ Sliding fork



▼ Flat fork



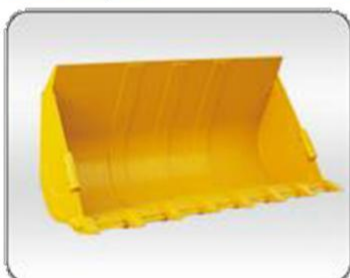
▼ Coal scuttle



▼ Side dump



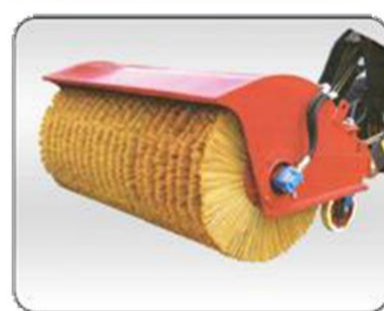
▼ Rock bucket



▼ Breaker



▼ Snowplow



▼ Snow shovel



▼ Quick change tooling



*We follow the principle of continuous improvement Product performance parameters will be partially changed due to technical improvements without prior notice.