

FK FUKU 福客

FUKE

**Boutique Manufacturing
Conquer The World With Quality**



FK-936G

进 取 不 止

www.fukeonline.com

fk002@fukebn.com

Basic Configuration

Bucket capacity

2.0m³

Operation weight

10000kg

Rated load

2800kg

Wheel base

2350mm

*We follows the principle of continuous improvement Product performance parameters will be partially changed due to technical improvements without prior notice.

Anhui FUKU Heavy Industries Ltd.

web:www.sfuke.com

Basic Parameters

Bucket Capacity: 2m³

Rated Load: 2800 Kg

Wheel Base: 2350mm (D)

Wheel Tread: 2150mm

Min. Ground Clearance: 380mm

Max. Dumping Height: 3500 Mm

Dump Distance: 1080mm

Total Times: 9s

Operation Weight: 10000kg

Rated Power/ Speed: 92kw

Dimension (L*W*H):6500*2280*3050 mm (A*B*C)

Comfortable operation

Safe performance

Strong bearing

Driving comfort

Easy maintenance

Reliable structure

Excellent efficiency

Booster

Car air conditioner

Protective Device

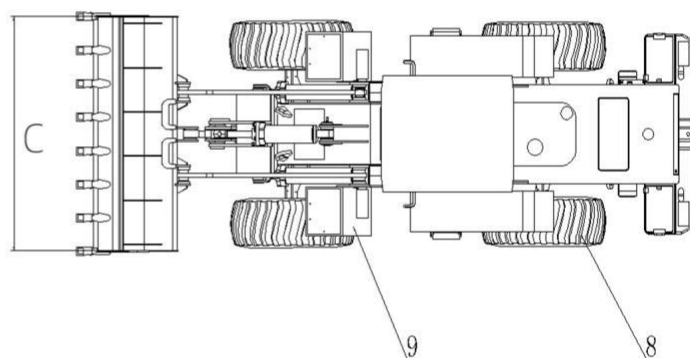
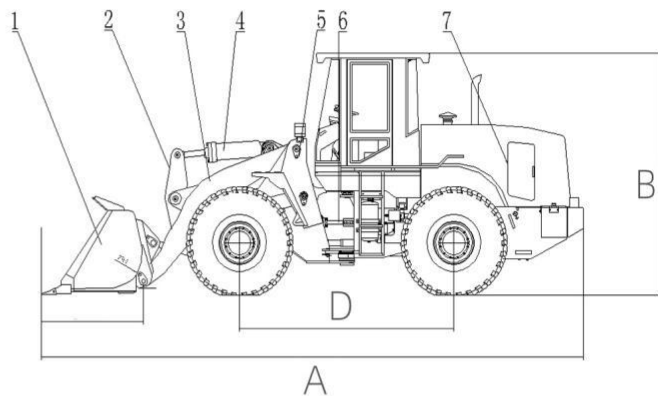
GPS positioning

On-board repair tools

CD Player

Fire extinguisher

Loader Outline



Accessories



*We follows the principle of continuous improvement Product performance parameters will be partially changed due to technical improvements without prior notice.

web:www.sfuke.com

whatsapp:+8613505697380

Address: Room 405, Building B-4, East Side of Dazhong Road, Cuozen

Town, FeidongCounty,Hefei City,Anhui Province

web:

www.sfuke.com

Type 1 Mechanical Operating System

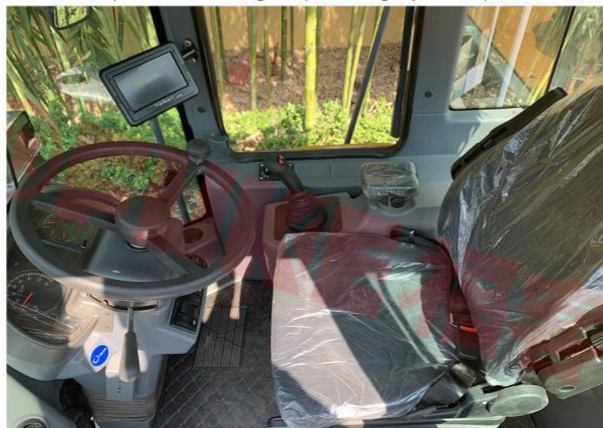


Type 2 Pilot Operating System



Type 3 Advanced Operating Systems

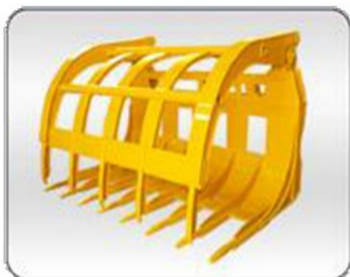
(Pilot and Image Operating Systems)



*We follows the principle of continuous improvement Product performance parameters will be partially changed due to technical improvements without prior notice.

Loader accessories ●

▼ Grass cutter



▼ Clamping machine



▼ Sliding fork



▼ Flat fork



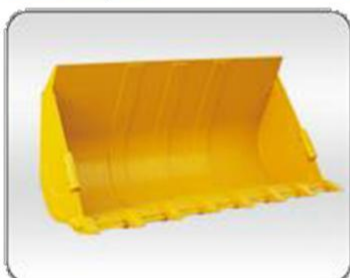
▼ Coal scuttle



▼ Side dump



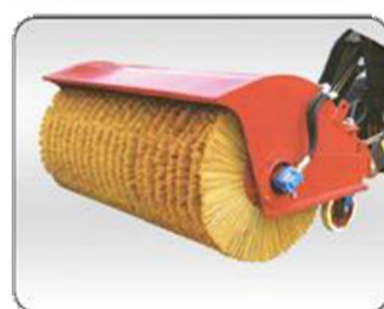
▼ Rock bucket



▼ Breaker



▼ Snowplow



▼ Snow shovel



▼ Quick change tooling



*We follow the principle of continuous improvement Product performance parameters will be partially changed due to technical improvements without prior notice.