

**FK FUKU 福客®**

**FUKE**

**Boutique Manufacturing,  
Conquer The World With Quality**

**FK-950L**

进 取 不 止



[www.fukeonline.com](http://www.fukeonline.com)

[fk002@fukebn.com](mailto:fk002@fukebn.com)

### *Basic Configuration*

**Bucket capacity**

3.0m<sup>3</sup>

**Operation weight**

17000kg

**Rated load**

5000kg

**Wheel base**

3200mm

\*We follows the principle of continuous improvement Product performance parameters will be partially changed due to technical improvements without prior notice.

**Anhui FUKU Heavy Industries Ltd.**

[web:www.sfuke.com](http://web:www.sfuke.com)



## Basic Parameters ●

Rated Load:5000kg

Overall Weight:17000kg

Rated Bucket Capacity:3.0m<sup>3</sup>

Maximum Tractive Force:158kn

Maximum Breakout Force ≥ 204kn

Rated Power:162kw-2200r/Min

Wheel Base (Mm):3200 (D)

Wheel Tread(Mm):2250

Dimension (L\*W\*H):7920\*3050\*3400mm (A\*B\*C)

Minimum Turning Radius:7020mm

No. Of Cylinder-Bore/Stroke:6 - 126×130mm

Maximum Grade Ability:30°C

Maximum Torque:9500n.m

Min Fuel-Consume Ratio≤208g/Kw.h

Engine Model : Yuchai

Power Shift Normally Engaged Straight Gear

Tyre: 23.5/70-16

Strong bearing

Driving comfort

Easy maintenance

Reliable structure

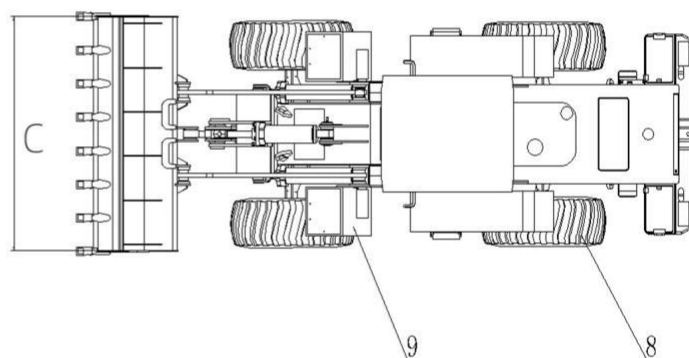
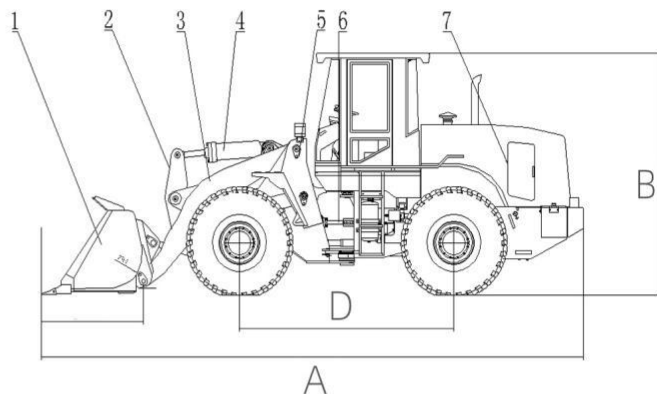
Excellent efficiency

Booster

Car air conditioner

Protective Device

## Loader Outline ●



## Accessories ●



\*We follows the principle of continuous improvement Product performance parameters will be partially changed due to technical improvements without prior notice.

web:www.sfuke.com

whatsapp:+8613505697380

Address: Room 405, Building B-4, East Side of Dazhong Road, Cuozhen

Town, FeidongCounty,Hefei City,Anhui Province

web:

www.sfuke.com

## Type 1 Mechanical Operating System

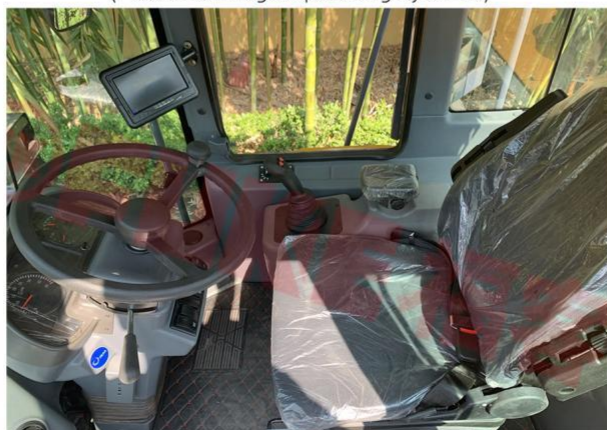


## Type 2 Pilot Operating System



## Type 3 Advanced Operating Systems

(Pilot and Image Operating Systems)

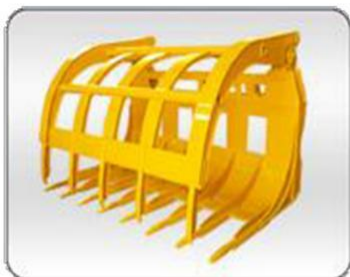


\*We follows the principle of continuous improvement Product performance parameters will be partially changed due to technical improvements without prior notice.



## Loader accessories ●

▼ Grass cutter



▼ Clamping machine



▼ Sliding fork



▼ Flat fork



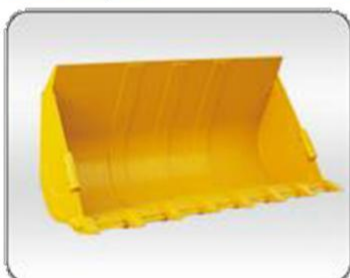
▼ Coal scuttle



▼ Side dump



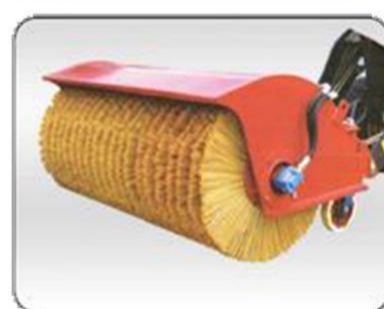
▼ Rock bucket



▼ Breaker



▼ Snowplow



▼ Snow shovel



▼ Quick change tooling



\*We follow the principle of continuous improvement Product performance parameters will be partially changed due to technical improvements without prior notice.