



Basic Configuration

Bucket capacity
3m³

Operation weight
17600kg

Rated load
6000kg

Wheel base
3668mm

Basic Parameters ●

Engine model: Yuchai

Rated power (kW): 129

Tyre model: 17.5-25

Bucket capacity (m³): 3

Rated load (T): 6

Operating weight (T): 17.6

Min. turning radius (mm): 6800

Speed (km/h): 0-30

Forward gear (km/h): I gear 0-9 II gear 0-30

Reverse gear (km/h): 0-12

Max. climbing gradient: 16°

Overall length: 8250

Overall width: 2100

Overall height: 2320

Min. ground clearance (mm): 305

Wheel base (mm): 3668

Max. dumping height (mm): 1870

Dumping reach (mm): 1750

Reliable structure

Excellent efficiency

Booster

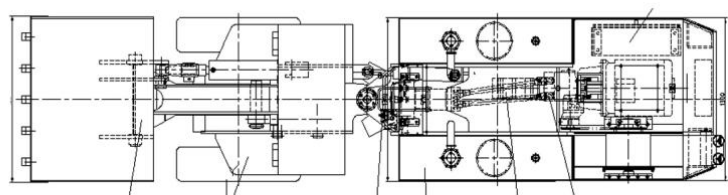
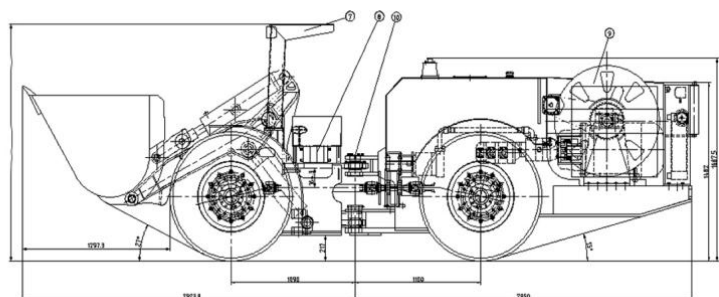
Protective Device

GPS positioning

On-board repair tools

CD Player

Loader Outline ●



Structure Workshop ●

FUKE 福客®

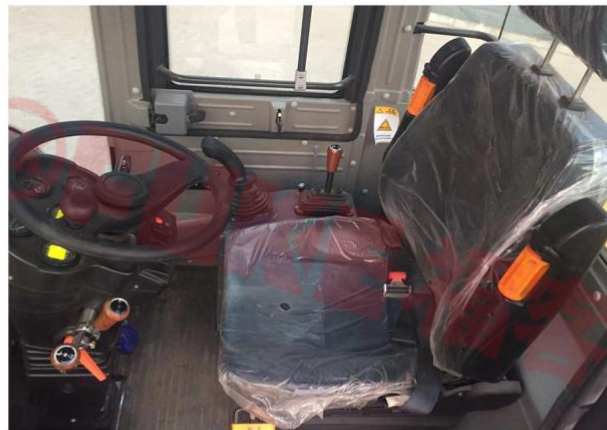
结构车间



Type 1 Mechanical Operating System



Type 2 Pilot Operating System



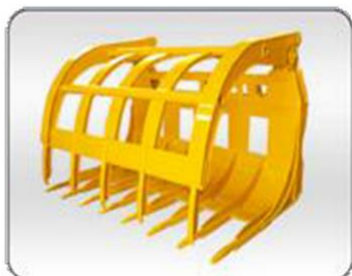
Type 3 Advanced Operating Systems

(Pilot and Image Operating Systems)

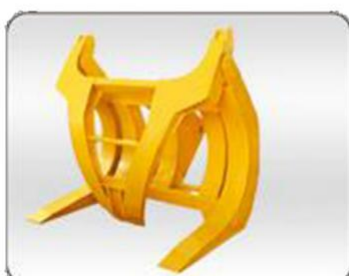


Loader accessories ●

▼ Grass cutter



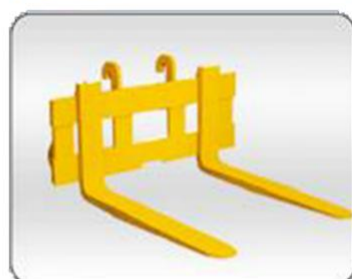
▼ Clamping machine



▼ Sliding fork



▼ Flat fork



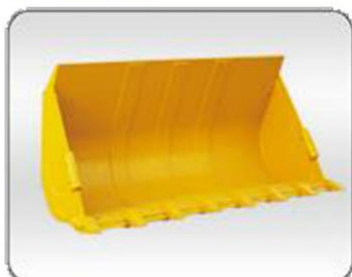
▼ Coal scuttle



▼ Side dump



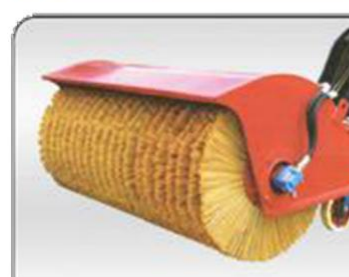
▼ Rock bucket



▼ Breaker



▼ Snowplow



▼ Snow shovel



▼ Quick change tooling

